



COMMONWEALTH COMMERCIAL

Comprehensive Property Solutions

5% COMMISSION



FOR SUBLEASE

1001 Haxall Point, Suite 706 | Richmond, Virginia 23219



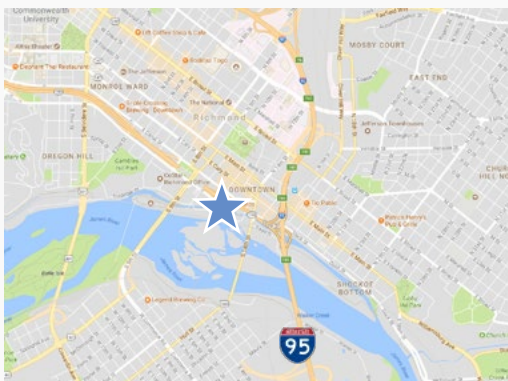
Jamie Galanti

T 804-433-1825

E jgalanti@commonwealthcommercial.com

Features

- › 3,850± SF plug and play office at *Riverside on the James*
- › Furniture included
- › Term runs through 3/31/2021
- › Aggressively seeking tenants
- › 4 private offices
- › Conference room
- › 14 barely used workstations
- › Very nice break room
- › 5% commission to procuring broker



MAIN OFFICE ADDRESS: 4198 Cox Road, Suite 200 | Glen Allen, VA 23060 MAILING ADDRESS: P.O. Box 71150 | Richmond, VA 23255

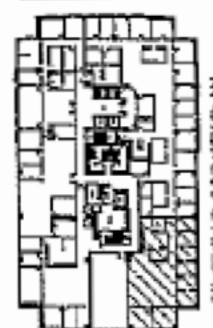
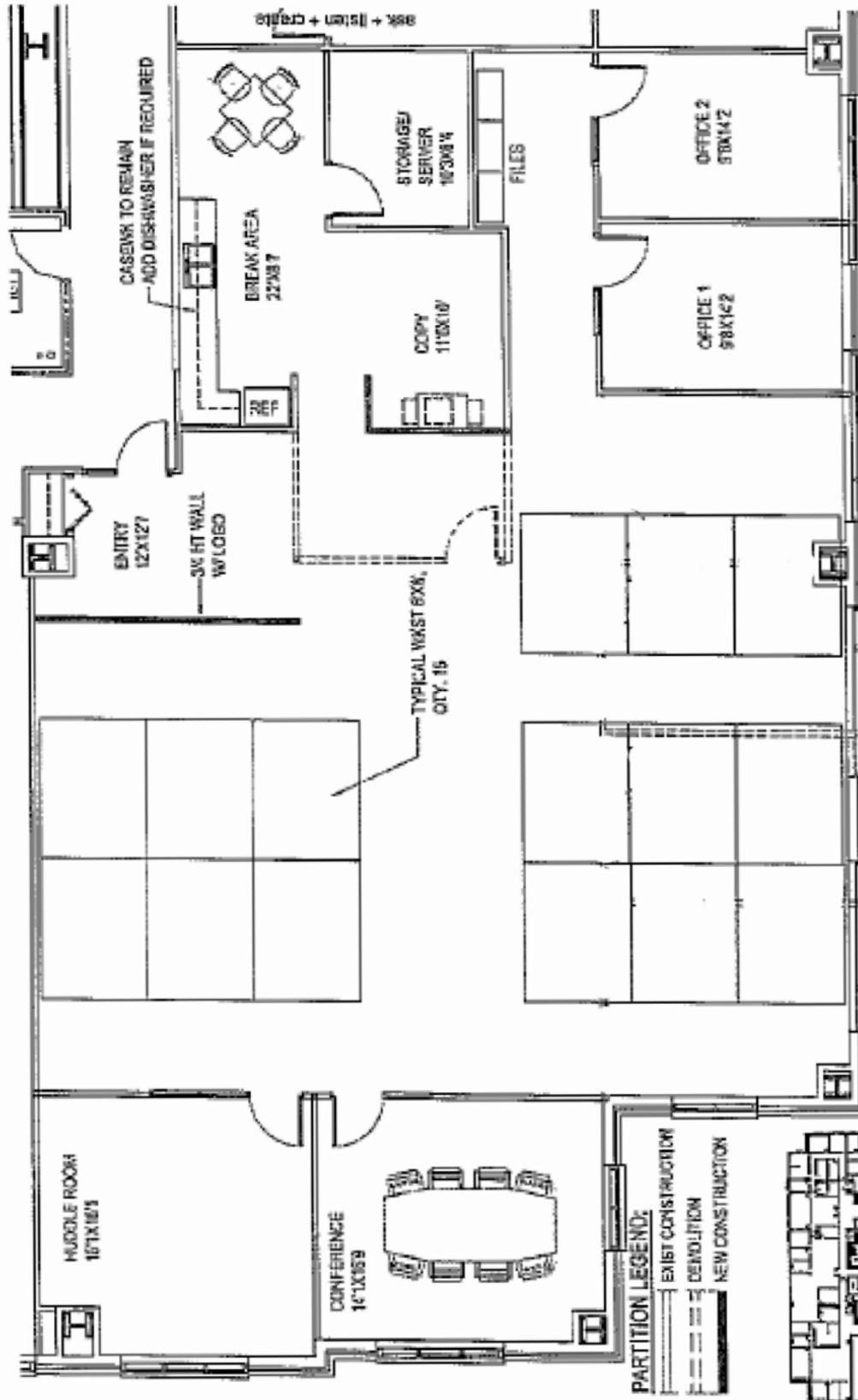
T 804-346-4966 F 804-346-5901 COMMONWEALTHCOMMERCIAL.COM

Commonwealth Commercial Partners, LLC represents the Owner of this property. Information contained herein, is deemed reliable but not guaranteed.



FOR SUBLEASE 1001 Haxall Point, Suite 706 | Richmond, Virginia 23219





OWNER:	AMERICAN REAL ESTATE PARTNERS	DATE:	6/11/15
PROJECT NAME:	SCOLLARS - RIVERSIDE ON THE JAVES	CRUSHING NO.:	
DESCRIPTION:	SPACE PLAN - 3,050 RSF	SHEET:	1
DATE:	2/15/2015	SCALE:	1/8" = 1'-0"
DWG. NO.:	2150033SPHADDWG		

