



COMMONWEALTH COMMERCIAL

Comprehensive Property Solutions



FOR LEASE

11091-11093 Air Park Road | Ashland, Virginia 23005



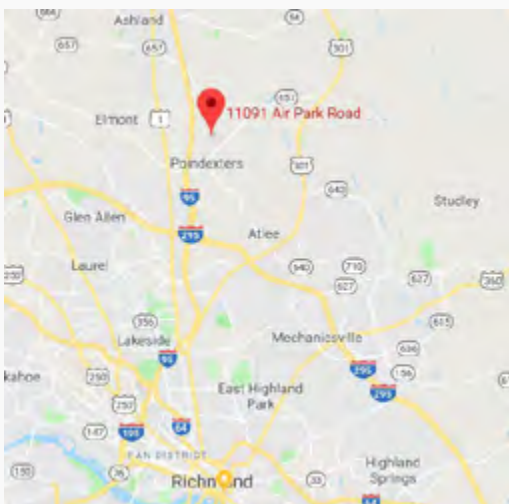
Ben Bruni

T 804-793-0046

E bbruni@commonwealthcommercial.com

Features

- › 5,100± SF office/warehouse with 1,200± SF office space
- › Conveniently located in Hanover County Industrial Park
- › 3 dock high loading doors with new overhead doors
- › 16' ceiling height in warehouse
- › Completely renovated office space
- › New warehouse lighting
- › New HVAC
- › Ample parking
- › Can be subdivided
- › 240 volt, 400 amp, 3-Phase service
- › Zoned M-3
- › \$9.75 psf, Modified Gross



MAIN OFFICE ADDRESS: 4198 Cox Road, Suite 200 | Glen Allen, VA 23060 MAILING ADDRESS: P.O. Box 71150 | Richmond, VA 23255

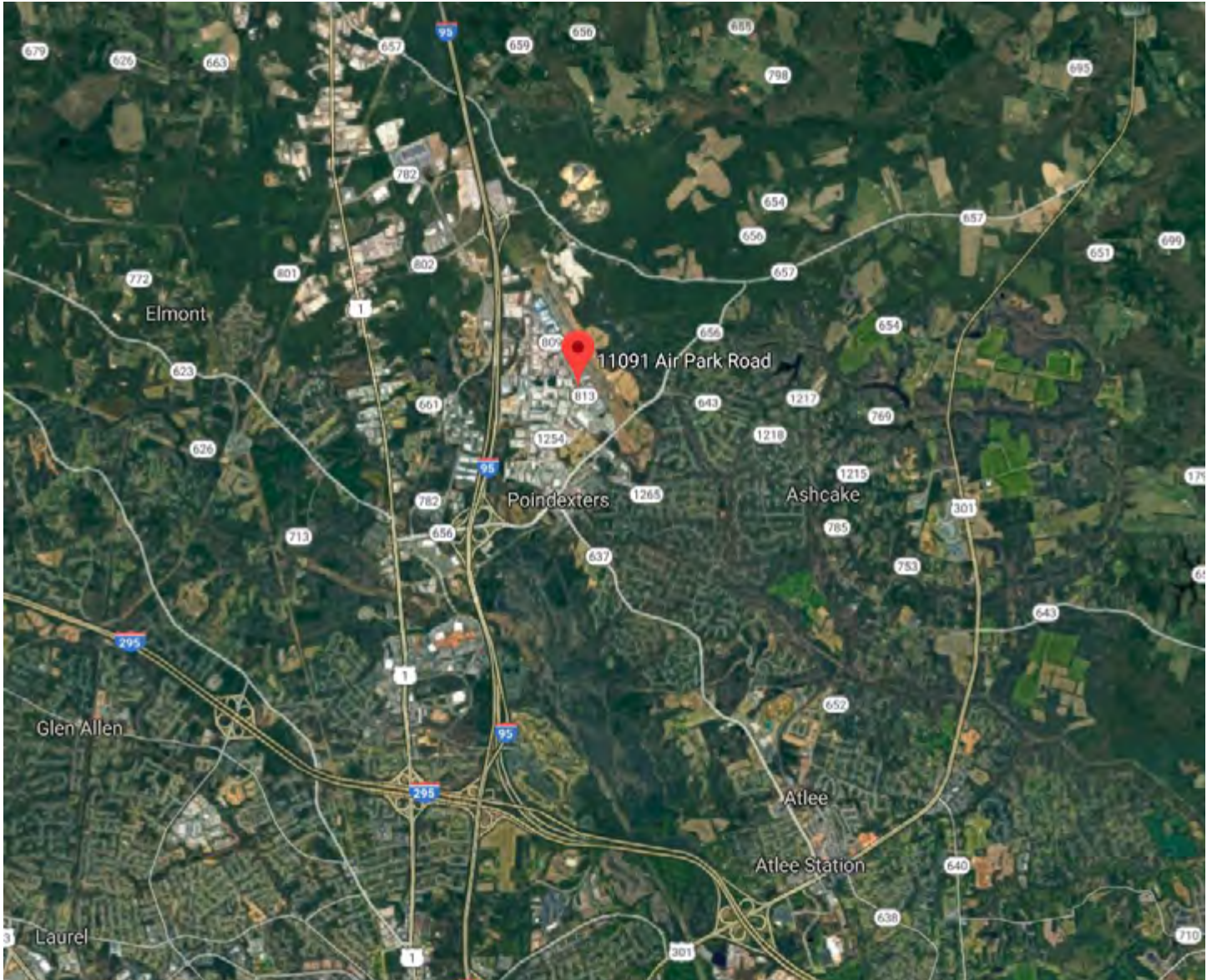
T 804-346-4966 F 804-346-5901 COMMONWEALTHCOMMERCIAL.COM

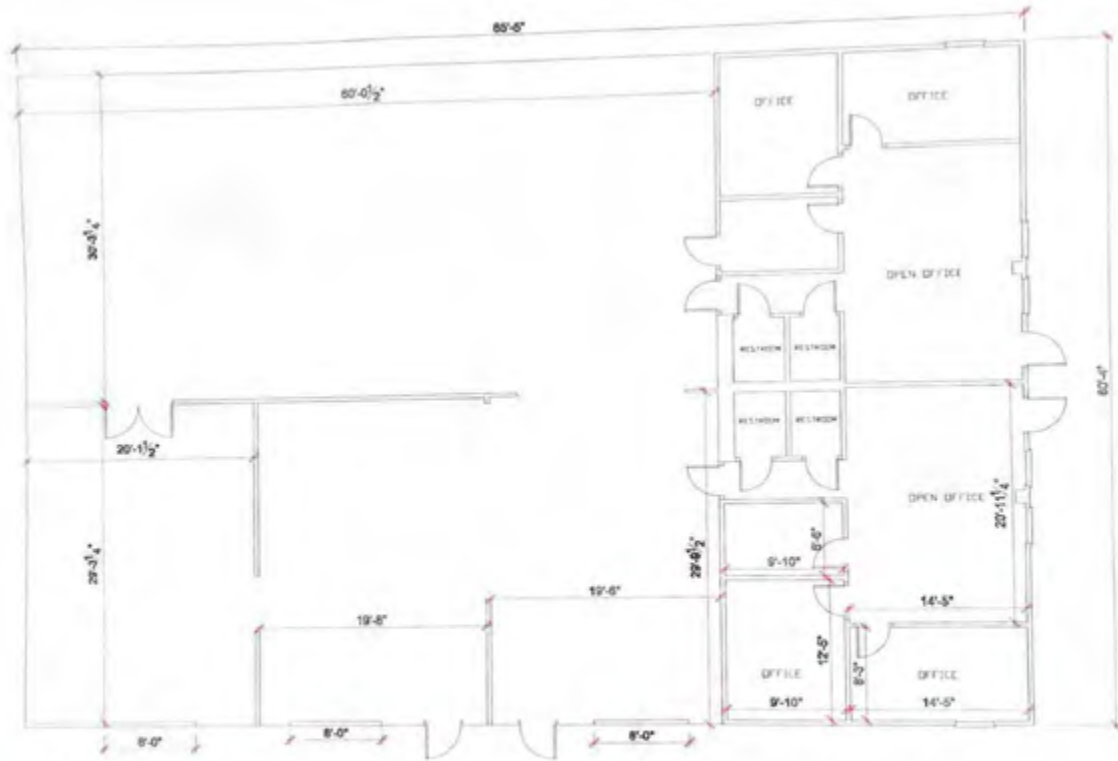
Commonwealth Commercial Partners, LLC represents the Owner of this property. Information contained herein, is deemed reliable but not guaranteed.



FOR LEASE

11091-11093 Air Park Road | Ashland, Virginia 23005

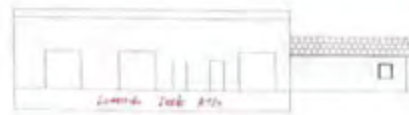




SCALE: 1/4" = 1'-0"



SCALE: N.T.S.



SCALE: N.T.S.

11091 & 11093 Air Park Road Ashland, Virginia 23005

