

FOR LEASE

3941 Deep Rock Road | Richmond, Virginia 23233



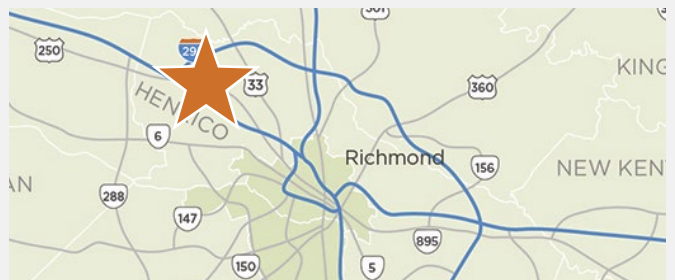
Features

- › 9,164± sf available for lease
- › 5,498± sf office - recently renovated
- › 3,666± sf warehouse - 18'-21' ceiling height
- › Zoned M-1
- › 1 driving-in loading door
- › Rental Rate: \$9.15/sf, NNN

Demographics

| | 1 Mile | 3 Miles | 5 Miles |
|--------------------------|----------|-----------|-----------|
| Total Population | 10,940 | 92,990 | 199,046 |
| Average HH Income | \$87,606 | \$105,409 | \$112,778 |

Vicinity Map



For More Information Regarding This Property, Please Contact:

NASH WARREN

804-793-0064
twarren

@commonwealthcommercial.com

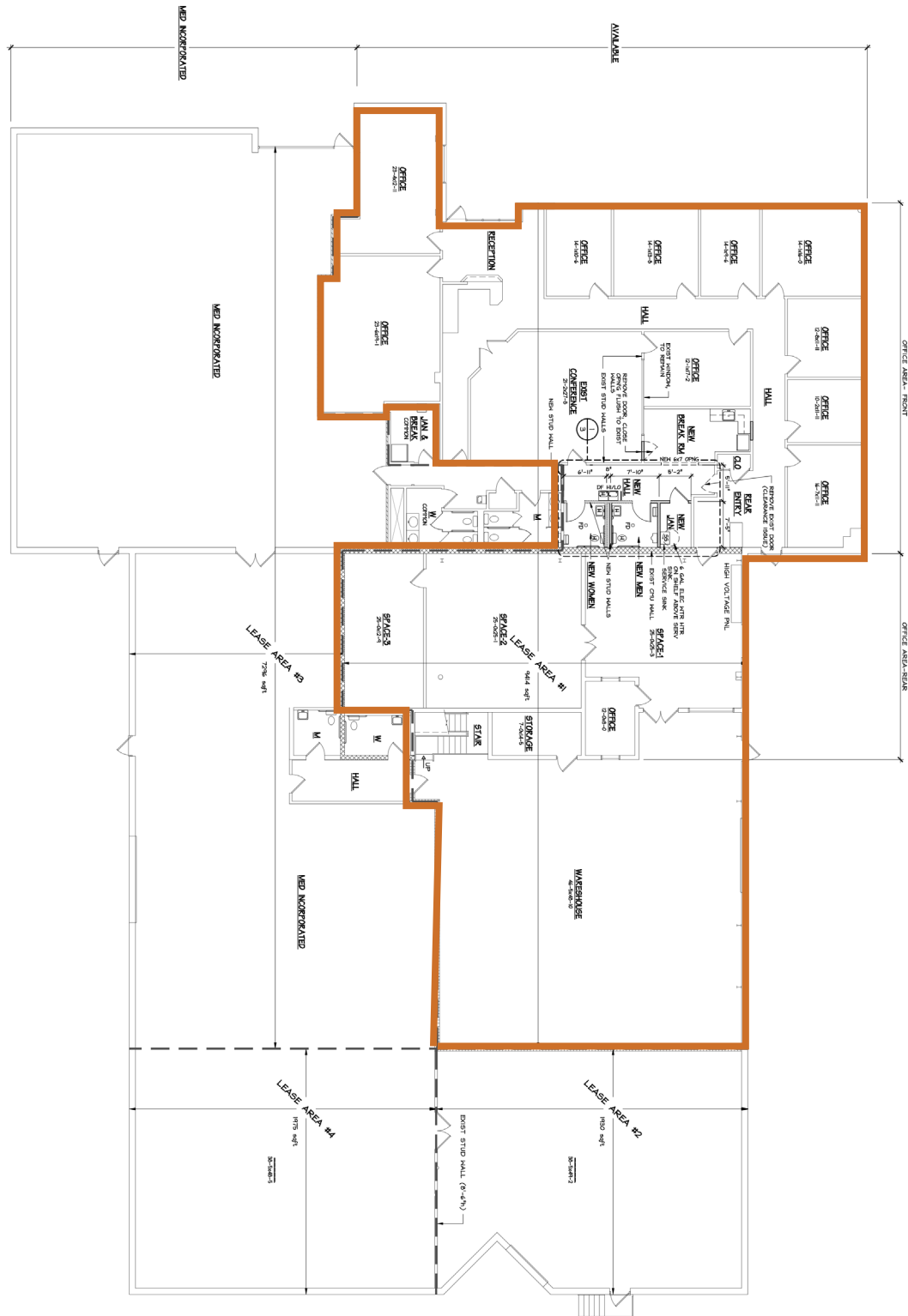
BEN BRUNI

804-793-0046
bbruni

@commonwealthcommercial.com



Main Level Floor Plan





Mezzanine Floor Plan

