

FOR SALE OR LEASE

Corner of Creighton Road and Laburnum Ave.
3384 Creighton Road, Richmond, VA 23223



Features

- Join Wawa and Family Dollar
- 1 to 3 Acre Pad Sites Available for Retail and/or Office/Warehouse Uses
- Public Utilities Stubbed to Site
- Zoned B-2C and M-1C
- Median Break in Place
- Demographics:

	1 Mile	3 Miles	5 Miles
Population	8,171	69,552	178,541
Med. HH Income	\$38,005	\$35,311	\$37,989



For additional information, please contact:

James H. McVey 804.433.1824
JMcvEy@CommonwealthCommercial.com

Joe Buhrman 804.433.1811
JBuhrman@CommonwealthCommercial.com

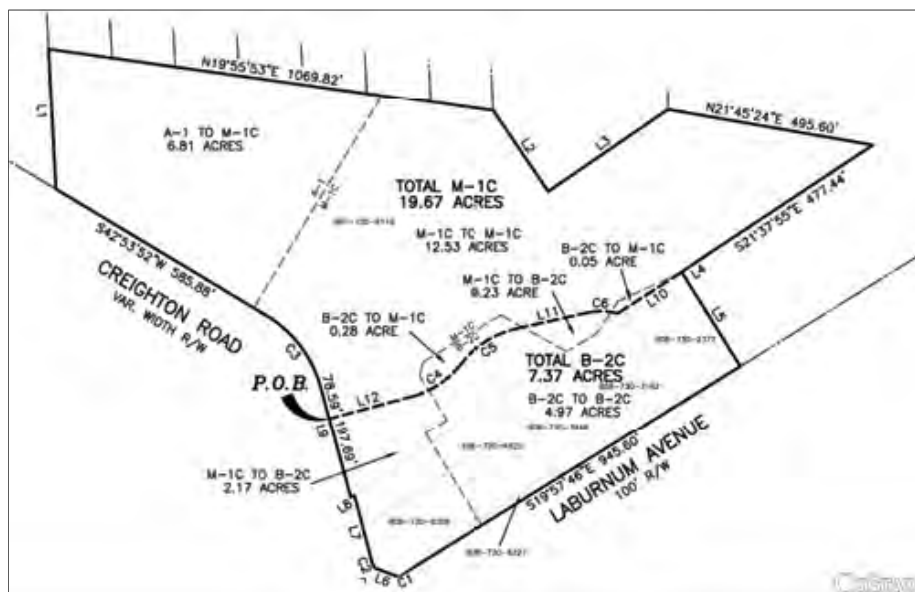


4198 Cox Road, Suite 200, Glen Allen, VA 23060 ■ Mailing Address: P. O. Box 71150, Richmond, VA 23255

Phone: 804.346.4966 ■ Fax: 804.346.5901 ■ www.CommonwealthCommercial.com

Commonwealth Commercial Partners, LLC represents the Owner of this property. Information contained herein, is deemed reliable but not guaranteed.

3384 Creighton Road Property



BUILDING: 104'x80' = 8,320 SF	SETBACKS	BUILDING	SIGNAGE	PARKING REQUIRED: 1 SPACE PER 200 SF
ACREAGE: ±1.13	FRONT 25'	BUILDING FRONT 25'	TYPE 'A' 144.17 SF	CALCULATION: 1 SPA PER 200 SF = 42 SPACES
ZONING: B-2C	SIDE INTERIOR 40'	BUILDING SIDE 40'	TYPE 'C' 74.75 SF	PROVIDED SPACES: 47
	REAR 0'	FREESTANDING 0'	MONUMENT	STALL DIMENSION: 9' WIDE x 18' DEEP

Laburnum Avenue

24,000 VPD



Retail Pad Sites

	125-G WAPPOO CREEK DRIVE CHARLESTON, SC 29412 (843) 722-9925 ANDREW SMITH	RICHMOND, VIRGINIA LABURNAM AVE AND CREIGHTON ROAD	DATE: 12-20-2013
			OPTION: 1

0 50' 100' 200'

NORTH

SCALE: 1" = 100'