

FOR LEASE

10640 Charter Hill Court | Ashland, Virginia 23005



Features

- › 3,245± total square feet for lease
- › Great for medical or office users
- › Available: *(can be combined)*
Suite 102 - 2,278± SF Suite 103 - 967± SF
- › Efficient layouts with existing plumbing
- › Private and lobby entrances and exits with ADA ramp access to building
- › Above average medical parking ±5.5/1,000
- › Excellent visibility with signalized intersection on Sliding Hill Road adjacent to Walmart
- › Monument and possible building signage available!
- › Conveniently located and less than 1 mile from I-95 and Atlee/Elmont interchange
- › Ownership on-site

Demographics

	1 Mile	3 Miles	5 Miles
Total Population	3,146	23,168	65,889
Average HH Income	\$118,369	\$116,047	\$100,983

For More Information Regarding This Property, Please Contact:

ELIZA IZARD

804-968-1155
eizard

@commonwealthcommercial.com

RUSSELL WYATT

804-433-1817
rwyatt

@commonwealthcommercial.com



FOR LEASE 10640 Charter Hill Court | Ashland, Virginia 23005

Property Photos



SUITE 102 — 2,278 SF

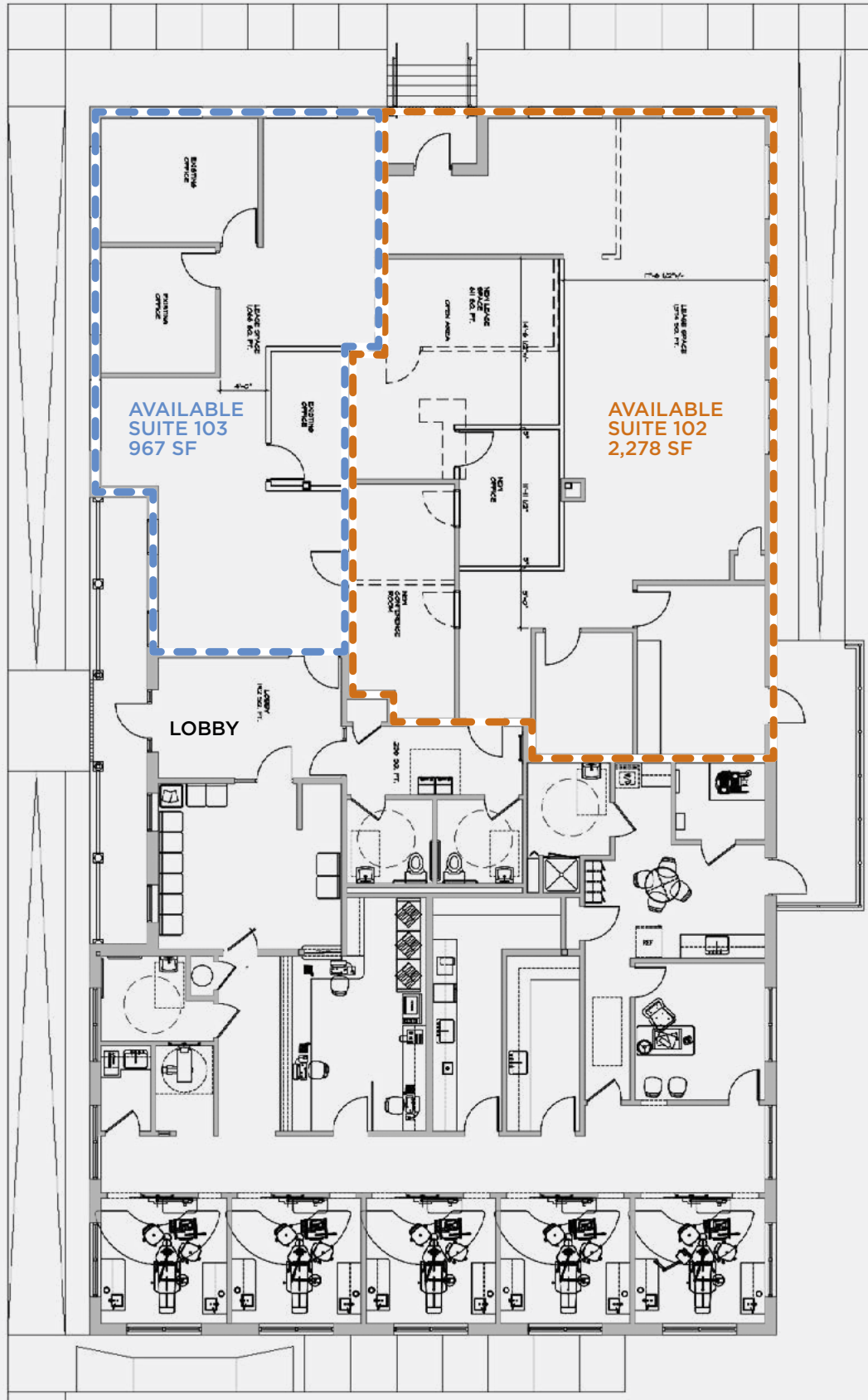


SUITE 103 — 967 SF





Floor Plan





FOR LEASE 10640 Charter Hill Court | Ashland, Virginia 23005

Retail Aerial

