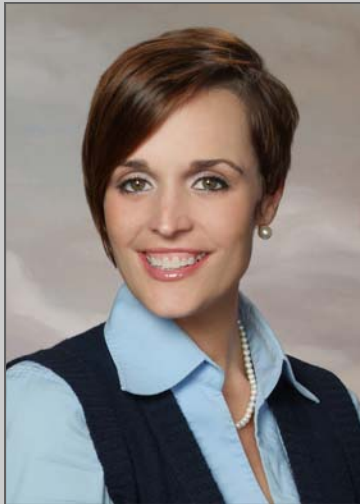


COMMONWEALTH COMMERCIAL PARTNERS, INC.

Professional Profile



Alison Cary Leap
Sales & Leasing

**COMMONWEALTH
COMMERCIAL PARTNERS, INC.**

7130 GLEN FOREST DRIVE, SUITE 110
RICHMOND, VA 23226
MAILING ADDRESS: P. O. BOX 71150
RICHMOND, VA 23255

Phone: 804-346-4966. Ext. 339
Fax: 804-346-5901

www.CommonwealthCommercial.com
ALeap@CommonwealthCommercial.com

Corporate Responsibilities

Alison's main focus and concentration is in Retail Brokerage. Alison's responsibilities include: Tenant and Landlord representation, the leasing and sale of retail properties including in-line leasing, outparcels, freestanding and site selection for local, regional and national retailers. She also performs select office and warehouse leasing for Richmond businesses.

Practice Areas

- *Landlord Representation Services
- *Tenant/Buyer Representation Services

Experience

Prior to joining Commonwealth Commercial in January 2011, Alison worked with The Wilton Companies. There she completed numerous retail, office, and warehouse sales & leasing transactions including many completed leases in The Wilton Companies' portfolio of retail shopping centers (2005-2010).

Prior to entering into commercial real estate, Alison worked in sales for Advertising Images and Embroidery, which was then acquired by Promotional Considerations (2001-2005).

Education

Alison is a graduate of Averett University earning a Bachelor's Degree in Business Administration. She received her Virginia Real Estate Salesperson's License in 2006.

Accomplishments

Alison is a Committee Member of the ICSC Next Generation.